

WHAT'S ALL THE BUZZ?

Quick Links

WWW.USGBC.ORG

WWW.NEFBA.COM

WWW.NEFAR.COM

WWW.NAHB.COM

Please visit our website
WWW.SGCvision.com
to learn more



FEATURED IN NEXT ISSUE



LEED NEIGHBORHOOD DESIGN



VISIONED RESULTS

A logo featuring silhouettes of trees and buildings in green and brown.

Smart Growth
Land Development Consultant

Michael Antonopoulos, P.E. 115 Solana Road, Suite B
Michael Antonopoulos & Associates, Inc. Ponte Vedra Beach, FL 32082
maainc@comcast.net 904-361-8193
firstcoastneighborhoods.com

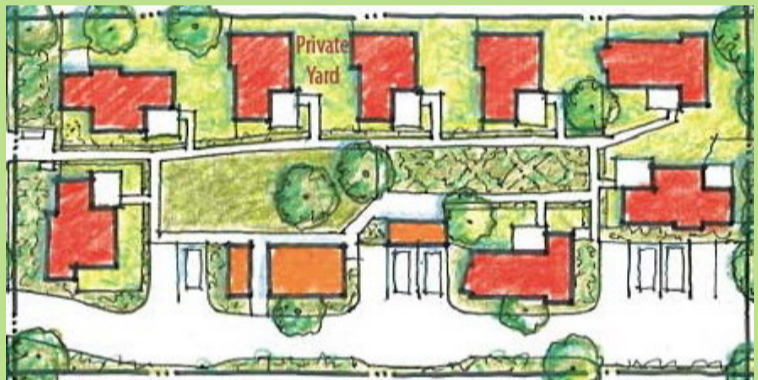
Placing emphasis on affordable
"Smart" planning and
development
techniques specific to each
project on an individual basis.
FOR MORE INFORMATION
CALL 904.361.8193

IT SEEMS THAT EVERYTHING YOU READ THESE DAYS IS ABOUT GREEN BUILDING OR SMART GROWTH. IS THIS JUST A CURRENT FAD OR THE DIRECTION OF THE BUILDING & DEVELOPMENT INDUSTRY AND MORE IMPORTANTLY, THE MARKET?

ACCORDING TO STUDIO 4 LLC THE NUMBER OF PUBLISHED GREEN BUILDING ARTICLES INCREASED FROM 1,000 IN YEAR 2000 TO 9,000 IN 2009 AND MEMBERSHIP IN THE U.S. GREEN BUILDING COUNCIL INCREASED OVER 50% PER YEAR DURING THE SAME PERIOD.

IS YOUR COMPANY KEEPING UP WITH THE CHANGING MARKET? LET SGC REVIEW ONE OF YOUR NEIGHBORHOODS FOR SMART GROWTH OPPORTUNITIES.

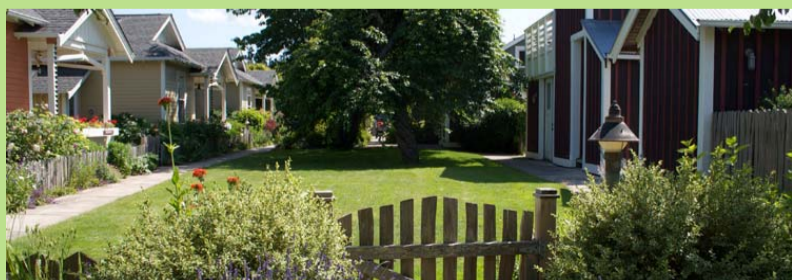
POCKET NEIGHBORHOOD



POCKET NEIGHBORHOODS ADD HOUSING DIVERSITY, EXPAND PRICE POINTS, AND RESULT IN SOCIAL, ECONOMIC AND ENVIRONMENTAL BENEFITS TO THE OVERALL NEIGHBORHOOD.

ROSS CHAPIN, AIA IS THE LEADING EXPERT IN POCKET NEIGHBORHOOD DESIGN AND DEVELOPMENT. ACCORDING TO CHAPIN, POCKET NEIGHBORHOODS ARE COHESIVE CLUSTERS OF HOMES GATHERED AROUND A COMMON AREA WITHIN A LARGER SURROUNDING NEIGHBORHOOD. THE COMMON AREAS OFFER SHARED OPEN SPACE AND FOSTER SOCIAL RELATIONSHIPS BETWEEN RESIDENTS.

POCKET NEIGHBORHOODS INHERENTLY INCORPORATE SUSTAINABLE AND SMART GROWTH DESIGN ELEMENTS SUCH AS COMMUNITY GARDENS, PEDESTRIAN/BICYCLE PATHS, PRESERVATION, AND DENSITY.



Learn more at:
www.Pocket-Neighborhoods.net